

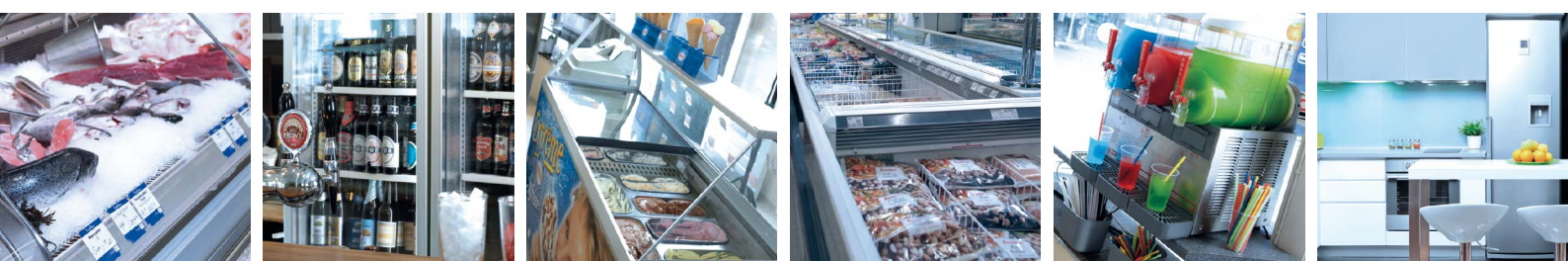
WITH MORE THAN 60 YEARS OF EXPERIENCE IN COMPRESSOR TECHNOLOGY AND HIGHLY DEDICATED EMPLOYEES, OUR FOCUS IS ON DEVELOPING AND

APPLYING ADVANCED COMPRESSOR TECHNOLOGIES TO ACHIEVE STANDARD SETTING PERFORMANCE FOR LEADING PRODUCTS AND BUSINESSES AROUND THE WORLD.



HERMETIC COMPRESSORS FOR AC VOLTAGE

R404A/R507 • R407C • 220-240 V



R404A/R507 • 220-240 V • 50 Hz

Compressor	Code number	Application	ASHRAE Capacity [W] T _c =54.4°C, T _{liq} =32.2°C, T _{suc} =32.2°C Evaporating temperature [°C]						ASHRAE						Displacement [cm ³]	Voltage and frequencies (* dual frequency type with 50/60 Hz)	Compressor cooling cooling (refer to data sheet)
			-35	-15	-5	0	10	15	LBP rating point -23.3°C / 54.4°C		MBP rating point -6.7°C / 54.4°C		HBP rating point 7.2°C / 54.4°C				
									Cooling capacity [W]	COP [W/W]	Cooling capacity [W]	COP [W/W]	Cooling capacity [W]	COP [W/W]			
TL4CL	102U2071	LBP	75	240	390				152	1.03	310	1.39			3.86	198-254 V, 50 Hz	F2
TL4DL	102U2038	M/HBP		227	362	454	670				287	1.26	519	1.81	3.86	198-254 V, 50 Hz	F2
TL4.5CLX	102U2111	LBP	102	301					198	1.05					4.63	198-254 V, 50 Hz	F2
FR6CL	103U2670	LBP	149	393	605				268	1.04	484	1.19			6.23	198-254 V, 50 Hz	F2
FR6DL	103U2680	M/HBP		403	599	730	1058				481	1.20	819	1.57	6.23	198-254 V, 50 Hz	F2
FR7.5CL	103U2790	LBP	158	433	657				294	1.03	528	1.15			6.93	198-254 V, 50 Hz	F2
FR8.5CL	103U2890	LBP	171	492					332	0.98					7.95	198-254 V, 50 Hz	F2
NF7MLX	105F3720	MBP		547	851	1039	1503				682	1.49	1164	2.12	7.27	187-254 V, 50 Hz *	F2
NL6.1MLX	105F3611	MBP		455	711	869			291	1.14	569	1.61	975	2.31	6.13	187-254 V, 50 Hz *	F2
NL7CLX	105F3710	LBP	200	576	876				388	1.31	704	1.60			7.27	198-254 V, 50 Hz	F2
NL8.4CLX	105F3800	LBP	218	627	953				422	1.28	765	1.54			8.35	198-254 V, 50 Hz	F2
NL9CLX	105F3802	LBP	236	674					457	1.34					8.35	198-254 V, 50 Hz	F2
SC10CL	104L2523	LBP	132	664	1079				402	1.13	859	1.45			10.29	198-254 V, 50 Hz	F2
SC10CLX	104L2533	L/MBP	130	655	1064	1316			396	1.11	847	1.51			10.29	198-254 V, 50 Hz *	F2
SC10MLX	104L2506	MBP		722	1127	1380					902	1.54	1553	2.18	10.29	187-254 V, 50 Hz *	F2
SC10DL	104L2525	M/HBP		644	1051	1300	1916	2295			837	1.51	1478	2.15	10.29	198-254 V, 50 Hz	F2
SC12CL	104L2623	LBP	165	857	1397				516	1.10	1112	1.50			12.87	198-254 V, 50 Hz	F2
SC12CLX.2	104L2697	LBP	278	899					593	1.15					12.87	198-254 V, 50 Hz *	F2
SC12MLX	104L2606	MBP		886	1369	1670			584	1.15	1096	1.56	1873	2.18	12.87	187-254 V, 50 Hz *	F2
SC12DL	104L2625	M/HBP		865	1407	1728	2508	2984			1122	1.57	1942	2.26	12.87	198-254 V, 50 Hz	F2
SC15CLX.2	104L2893	LBP	339	1097					724	1.18					15.28	198-254 V, 50 Hz	F2
SC15CLX.2	104L2896	LBP	339	1097					724	1.18					15.28	198-254 V, 50 Hz	F2
SC15MLX	104L2869	MBP		1117	1718	2102			762	1.20	1375	1.56	2371	2.16	15.28	198-254 V, 50 Hz	F2
SC15DL	104L2856	M/HBP		1034	1641	2012	2928	3492			1311	1.56	2265	2.25	15.28	198-254 V, 50 Hz	F2
SC18CL	104L2123	LBP	374	1220	1882				803	1.22	1508	1.50			17.69	198-254 V, 50 Hz	F2
SC18MLX	104L2139	MBP		1306	2001	2446			894	1.27	1603	1.64	2757	2.27	17.69	198-254 V, 50 Hz	F2
SC18CLX.2	104L2197	LBP	415	1343					886	1.20					17.69	198-254 V, 50 Hz	F2
SC18MLX.3	104L2146	MBP		1384	2097	2552			959	1.34	1683	1.67	2862	2.28	17.68	198-254 V, 50 Hz	F2
SC21CL	104L2322	LBP	442	1386					905	1.18					20.95	198-254 V, 50 Hz	F2
SC10/10CL	104L4087	LBP	264	1327	2157				803	1.13	1717	1.45			20.58	198-254 V, 50 Hz	F2
SC10/10DL	104L4091	M/HBP		1288	2103	2601	3832	4590			1674	1.51	2955	2.15	20.58	198-254 V, 50 Hz	F2
SC12/12CL	104L4088	LBP	330	1715	2794				1032	1.10	2224	1.50			25.74	198-254 V, 50 Hz	F2
SC12/12DL	104L4092	M/HBP		1730	2814	3456	5016	5967			2244	1.57	3885	2.26	25.74	198-254 V, 50 Hz	F2
SC15/15CL	104L4089	LBP	360	2202	3356				1395	1.20	2699	1.50			30.56	198-254 V, 50 Hz	F2
SC15/15DL	104L4093	M/HBP		2068	3282	4024	5856	6983			2622	1.56	4529	2.25	30.56	198-254 V, 50 Hz	F2
SC18/18CLX.2	104L4035	LBP	823	2670					1761	1.20					35.36	198-254 V, 50 Hz	F2
SC18/18CL	104L4090	LBP	748	2440	3762				1606	1.22	3016	1.50			35.38	198-254 V, 50 Hz	F2
SC21/21CL	104L4094	LBP	884	2773					1810	1.18					41.90	198-254 V, 50 Hz	F2
GS21MLX	107B0502	MBP		1578	2486	3070					1984	1.79	3514	2.53	21.20	198-254 V, 50 Hz	F2
GS26CLX	107B0500	LBP	614	2017					1323	1.35					26.30	198-254 V, 50 Hz	F2
GS26MLX	107B0503	MBP		2069	3229	3954					2584	1.86	4467	2.56	26.30	198-254 V, 50 Hz	F2
GS34CLX	107B0501	LBP	943	2874	4412				1917	1.45	3537	1.74			33.80	198-254 V, 50 Hz	F2
GS34MLX	107B0504	MBP		2766	4178	5053					3359	1.71	5626	2.25	33.80	198-254 V, 50 Hz	F2

Electrical equipment

Dimensions						LST (RSIR & RSCR) refer to data sheet for more info					Run capacitor (RC)		HST (CSIR & CSR) * alt. cable lengths avail.			LST/HST		
Height [mm]		Connectors location/I.D. [mm]			alt. connectors available	PTC starting device		PTC starting device with RC connector		ePTC	• optional • compulsory *		Starting relay	Starting capacitor	Starting device *	Cord relief	Cover	
A	B	Suction C	Process D	Dis-charge E		Spades		Spades		Spades	Spades		Spades		Spades			
						6.3 mm	4.8 mm	6.3 mm	4.8 mm	4.8 mm	6.3 mm	4.8 mm	6.3 mm	6.3 mm	6.3 mm			
173	169	6.2	6.2	5.0										117U6000	117U5014		103N1010	103N2010
173	169	6.2	6.2	5.0										117U6001	117U5014		103N1010	103N2010
173	169	6.2	6.2	5.0										117U6001	117U5014		103N1010	103N2010
196	191	8.2	6.2	6.2	X									117U6015	117U5015		103N1010	103N2010
196	191	8.2	6.2	6.2										117U6010	117U5015		103N1010	103N2010
196	191	8.2	6.2	6.2										117U6016	117U5015		103N1010	103N2010
196	191	8.2	6.2	6.2	X									117U6010	117U5015		103N1010	103N2010
203	197	9.7	6.5	6.5	X									117U4139	117U5018		117U0349	117U1021
203	197	8.2	6.5	6.5	X									117U6022	117U5015		103N1010	103N2011
203	197	8.2	6.2	6.2	X									117U6002	117U5015		103N1010	103N2010
203	197	8.2	6.2	6.2	X	103N0011	103N0018							117U6003	117U5015		103N1010	103N2010
203	197	8.2	6.2	6.2										117U6003	117U5015		103N1010	103N2010
209	203	8.2	6.2	6.2	X									117U6003	117U5017		103N1004	103N2009
209	203	8.2	6.2	6.2	X									117U6005	117U5017		103N1004	103N2008
209	203	8.2	6.5	6.5										117U6011	117U5017		103N1004	103N2008
209	203	8.2	6.2	6.2	X									117U6005	117U5017		103N1004	103N2009
209	203	8.2	6.2	6.2	X									117U6005	117U5017		103N1004	103N2009
219	213	8.2	6.2	6.2	X									117U6019	117U5017		103N1004	103N2008
219	213	8.2	6.5	6.5										117U6011	117U5017		103N1004	103N2008
219	213	10.2	6.2	6.2	X									117U6019	117U5017		103N1004	103N2009
219	213	9.63	6.5	6.5	X									117U6019	117U5017		103N1004	103N2009
219	213	10.2	6.2	6.2	X									117U6019	117U5017		103N1004	103N2009
219	213	10.2	6.2	6.2										117U6013	117U5012		103N1004	103N2009
219	213	10.2	6.2	6.2	X										117U5373	117-7029	103N1004	103N2009
219	213	10.2	6.2	6.2	X										117U5373	117-7027	103N1004	103N2009
219	213	10.2	6.2	6.2											117U5373	117-7027	103N1004	103N2009
219	213	10.2	6.2	6.2	X									117U6013	117U5012		103N1004	103N2009
219	213	10.2	6.2	6.2												117-7027	103N1004	103N2009
219	213	10.2	6.2	6.2	X										117U5373	117-7027	103N1004	103N2009
249	244	12	6.2	6.2										117U6003	117U5017		103N1004	103N2009
249	244	12	6.2	6.2										117U6005	117U5017		103N1004	103N2009
249	244	12	6.2	6.2										117U6005	117U5017		103N1004	103N2009
259	254	12	6.2	6.2										117U6019	117U5017		103N1004	103N2009
259	254	12	6.2	6.2	X									117U6019	117U5017		103N1004	103N2009
259	254	16	6.2	6.2											117U5373	117-7029	103N1004	103N2009
259	254	12	6.2	6.2										117U6013	117U5012		103N1004	103N2009
259	254	16	6.2	6.2												117-7027	103N1004	103N2009
259	254	16	6.2	6.2											117U5373	117-7027	103N1004	103N2009
259	247	16.1	6.5	9.7												117-7070		107B9101
259	247	12.9	6.5	8.2												117-7056		107B9101
279	267	16.1	6.5	9.7												117-7072		107B9101
279	267	12.9	6.5	8.2	X											117-7074		107B9101
279	267	16.1	6.5	9.7												117-7056		107B9101

R404A/R507 • 220-240 V • 60 Hz																			
Compressor	Code number	Application	ASHRAE Capacity [W] T _c =54.4°C, T _{liq} =32.2°C, T _{suc} =32.2°C Evaporating temperature [°C]						ASHRAE						Displacement [cm ³]	Voltage and frequencies [* dual frequency type with 50/60 Hz]	Compressor cooling cooling (refer to data sheet)		
			LBP rating point -23.3°C / 54.4°C		MBP rating point -6.7°C / 54.4°C		HBP rating point 7.2°C / 54.4°C		Cooling capacity		COP		Cooling capacity					COP	
			-35	-15	-5	0	10	15	[W]	[W/W]	[W]	[W/W]	[W]	[W/W]				[W]	[W/W]
SC12CLX	104L2695	LBP	226	1097					698	1.23							12.87	198-254 V, 60 Hz	F2
SC12CLX.2	104L2699	LBP	317	1085					707	1.27							12.87	187-254 V, 60 Hz	F2
SC15CLX	104L2854	LBP	235	1213					774	1.23							15.28	198-254 V, 60 Hz	F2
SC15CLX.2	104L2897	LBP	413	1337					882	1.33							15.28	187-254 V, 60 Hz	F2
SC15MLX.2	104L2803	MBP		1233	1896	2320			841	1.20	1518	1.56	2617	2.16			15.28	187-254 V, 60 Hz	F2
SC18CLX.2	104L2195	LBP	520	1554					1114	1.39							17.69	187-254 V, 60 Hz	F2
SC18MLX	104L2138	MBP		1521	2328	2839			1033	1.18	1866	1.47	3186	1.99			17.69	187-254 V, 60 Hz	F2
SC12/12CLX	104L4034	LBP	450	2182					1389	1.23							25.74	198-254 V, 60 Hz	F2
GS21CLX	107B0506	LBP	584	1918					1258	1.35							21.20	187-254 V, 60 Hz	F2
GS21MLX	107B0509	MBP		2043	3134	3819					2513	1.86	4293	2.55			21.20	187-254 V, 60 Hz	F2
GS26CLX	107B0505	LBP	719	2114					1425	1.21							26.30	187-254 V, 60 Hz	F2

R404A/R507 • 220-240 V • 50/60 Hz																			
Compressor	Code number	Application	ASHRAE Capacity [W] T _c =54.4°C, T _{liq} =32.2°C, T _{suc} =32.2°C Evaporating temperature [°C]						ASHRAE						Displacement [cm ³]	Voltage and frequencies [* dual frequency type with 50/60 Hz]	Compressor cooling cooling (refer to data sheet)		
			LBP rating point -23.3°C / 54.4°C		MBP rating point -6.7°C / 54.4°C		HBP rating point 7.2°C / 54.4°C		Cooling capacity		COP		Cooling capacity					COP	
			-35	-15	-5	0	10	15	[W]	[W/W]	[W]	[W/W]	[W]	[W/W]				[W]	[W/W]
NL6.1MLX	105F3611	MBP		543	844	1031			350	1.24	676	1.62	1155	2.20			6.13	187-254 V, 60 Hz *	F2
NF7MLX	105F3720	MBP		662	1030	1257			426	1.16	825	1.56	1409	2.04			7.27	187-254 V, 60 Hz *	F2
SC10CLX	104L2533	L/MBP	155	816					518	1.16							10.29	198-254 V, 60 Hz *	F2
SC10MLX	104L2506	MBP		842	1332	1634			530	1.15	1064	1.53	1842	2.01			10.29	187-254 V, 60 Hz *	F2
SC12CLX.2	104L2697	LBP	317	1085					707	1.19							12.87	198-254 V, 60 Hz *	F2
SC12MLX	104L2606	MBP		1009	1574	1923			650	1.18	1260	1.52	2157	1.98			12.87	187-254 V, 60 Hz *	F2

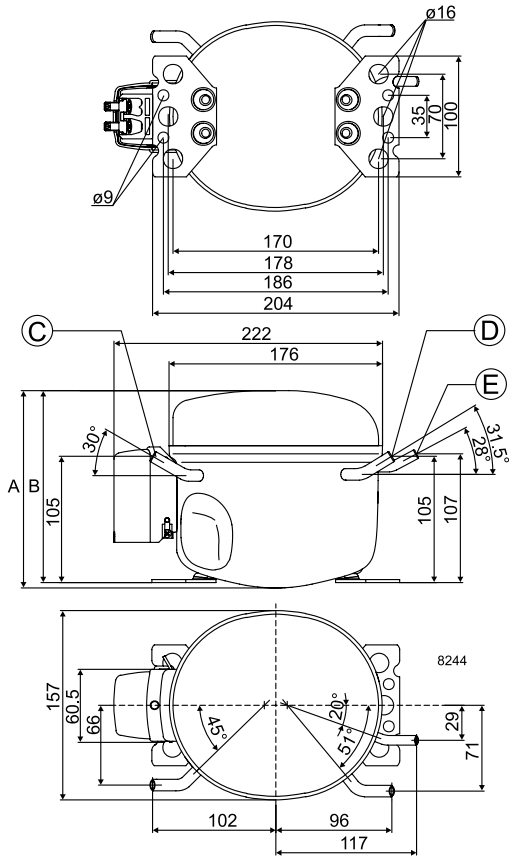
R407C • 220-240 V • 50 Hz																			
Compressor	Code number	Application	ASHRAE Capacity [W] T _c =54.4°C, T _{liq} =32.2°C, T _{suc} =32.2°C Evaporating temperature [°C]						ASHRAE						Displacement [cm ³]	Voltage and frequencies [* dual frequency type with 50/60 Hz]	Compressor cooling cooling (refer to data sheet)		
			LBP rating point -23.3°C / 54.4°C		MBP rating point -6.7°C / 54.4°C		HBP rating point 7.2°C / 54.4°C		Cooling capacity		COP		Cooling capacity					COP	
			-35	-15	-5	0	10	15	[W]	[W/W]	[W]	[W/W]	[W]	[W/W]				[W]	[W/W]
SC10DL	104L2525	M/HBP		469	842	1074	1653	2013			685	1.57	1308	2.32			10.29	198-254 V, 50 Hz	F2
SC12DL	104L2625	M/HBP		621	1087	1385	2144	2620			886	1.58	1692	2.38			12.87	198-254 V, 50 Hz	F2
SC15DL	104L2856	M/HBP		782	1351	1709	2612	3174			1104	1.70	2069	2.59			15.28	198-254 V, 50 Hz	F2
SC10/10DL	104L4091	M/HBP		937	1685	2148	3307	4026			1371	1.57	2615	2.32			20.58	198-254 V, 50 Hz	F2
SC12/12DL	104L4092	M/HBP		1241	2174	2769	4287	5239			1772	1.58	3384	2.38			25.74	198-254 V, 50 Hz	F2
SC15/15DL	104L4093	M/HBP		1563	2703	3419	5224	6348			2208	1.70	4137	2.59			30.56	198-254 V, 50 Hz	F2

						Electrical equipment											
Dimensions						LST (RSIR & RSCR) refer to data sheet for more info					Run capacitor (RC)		HST (CSIR & CSR) * alt. cable lengths avail.			LST/HST	
Height [mm]		Connectors location/I.D. [mm]			alt. connectors available	PTC starting device		PTC starting device with RC connector		ePTC	• optional • compulsory *		Starting relay	Starting capacitor	Starting device *	Cord relief	Cover
A	B	Suction	Process	Dis-charge E		Spades		Spades		Spades	Spades		Spades		Spades		
		C	D	E		6.3 mm	4.8 mm	6.3 mm	4.8 mm	4.8 mm	6.3 mm	4.8 mm	6.3 mm	6.3 mm	6.3 mm		
219.0	213.0	8.2	6.2	6.2	X								117U6019	117U5017		103N1004	103N2008
219.0	213.0	9.63	6.5	6.5	X										117-7027	103N1004	103N2008
219.0	213.0	10.2	6.2	6.2										117U5373	117-7039	103N1004	103N2008
219.0	213.0	9.63	6.5	6.5	X									117U5373	117-7039	103N1004	103N2008
219.0	213.0	9.63	6.5	6.5											117-7058	103N1004	103N2008
219.0	213.0	9.63	6.5	6.5	X									117U5373	117-7066	103N1004	103N2008
219.0	213.0	9.63	6.5	6.5											117-7066	103N1004	103N2008
259.0	254.0	12.0	6.2	6.2									117U6019	117U5017		103N1004	103N2009
259.0	247.0	12.9	6.5	8.2											117-7073		107B9101
279.0	267.0	12.9	6.5	9.7											117-7073		107B9106
279.0	267.0	12.9	6.5	8.2											117-7073		107B9101

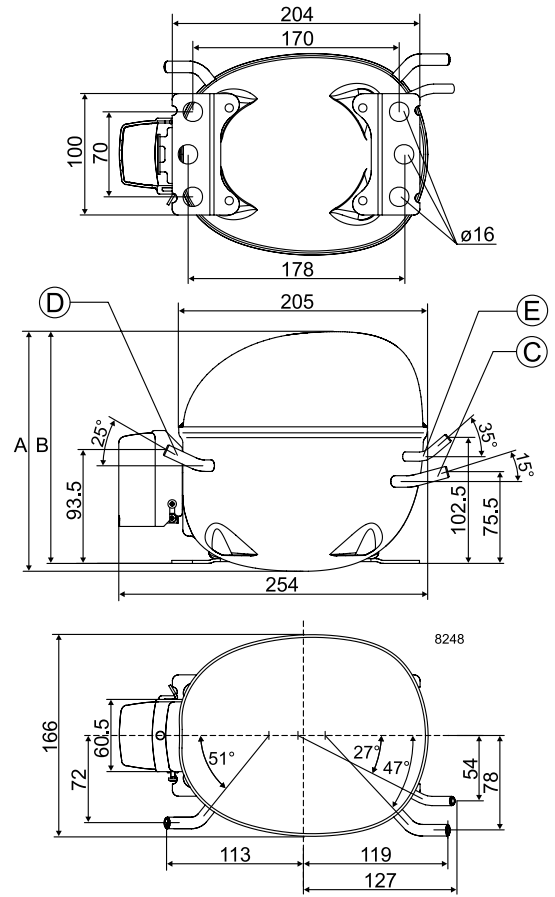
						Electrical equipment											
Dimensions						LST (RSIR & RSCR) refer to data sheet for more info					Run capacitor (RC)		HST (CSIR & CSR) * alt. cable lengths avail.			LST/HST	
Height [mm]		Connectors location/I.D. [mm]			alt. connectors available	PTC starting device		PTC starting device with RC connector		ePTC	• optional • compulsory *		Starting relay	Starting capacitor	Starting device *	Cord relief	Cover
A	B	Suction	Process	Dis-charge E		Spades		Spades		Spades	Spades		Spades		Spades		
		C	D	E		6.3 mm	4.8 mm	6.3 mm	4.8 mm	4.8 mm	6.3 mm	4.8 mm	6.3 mm	6.3 mm	6.3 mm		
203	197	8.2	6.5	6.5	X								117U6022	117U5015		103N1010	103N2011
203	197	9.7	6.5	6.5	X								117U4139	117U5018		117U0349	117U1021
209	203	8.2	6.2	6.2	X								117U6005	117U5017		103N1004	103N2008
209	203	8.2	6.5	6.5									117U6011	117U5017		103N1004	103N2008
219	213	8.2	6.2	6.2	X								117U6019	117U5017		103N1004	103N2008
219	213	8.2	6.5	6.5									117U6011	117U5017		103N1004	103N2008

						Electrical equipment											
Dimensions						LST (RSIR & RSCR) refer to data sheet for more info					Run capacitor (RC)		HST (CSIR & CSR) * alt. cable lengths avail.			LST/HST	
Height [mm]		Connectors location/I.D. [mm]			alt. connectors available	PTC starting device		PTC starting device with RC connector		ePTC	• optional • compulsory *		Starting relay	Starting capacitor	Starting device *	Cord relief	Cover
A	B	Suction	Process	Dis-charge E		Spades		Spades		Spades	Spades		Spades		Spades		
		C	D	E		6.3 mm	4.8 mm	6.3 mm	4.8 mm	4.8 mm	6.3 mm	4.8 mm	6.3 mm	6.3 mm	6.3 mm		
209	203	8.2	6.2	6.2	X								117U6005	117U5017		103N1004	103N2009
219	213	10.2	6.2	6.2	X								117U6019	117U5017		103N1004	103N2009
219	213	10.2	6.2	6.2	X									117U5373	117-7029	103N1004	103N2009
249	244	12	6.2	6.2									117U6005	117U5017		103N1004	103N2009
259	254	12	6.2	6.2									117U6019	117U5017		103N1004	103N2009
259	254	16	6.2	6.2										117U5373	117-7029	103N1004	103N2009

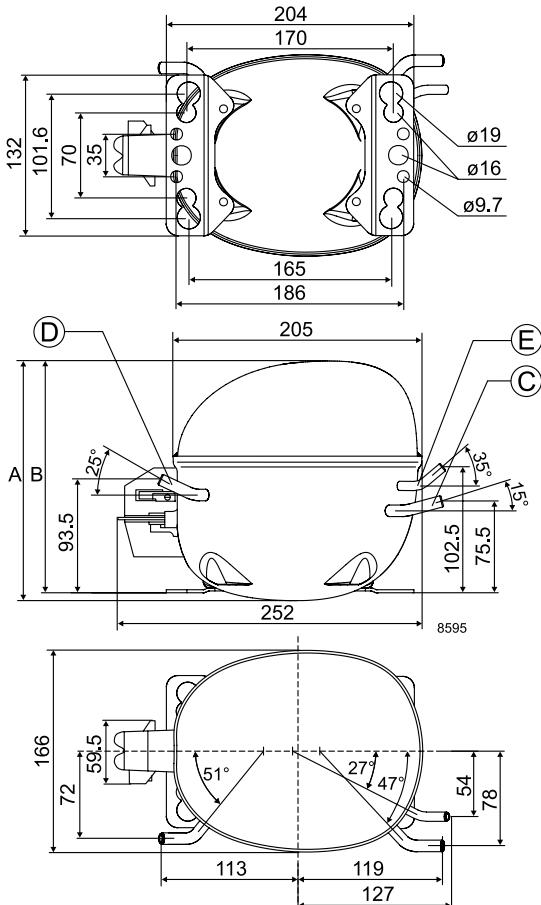
TL



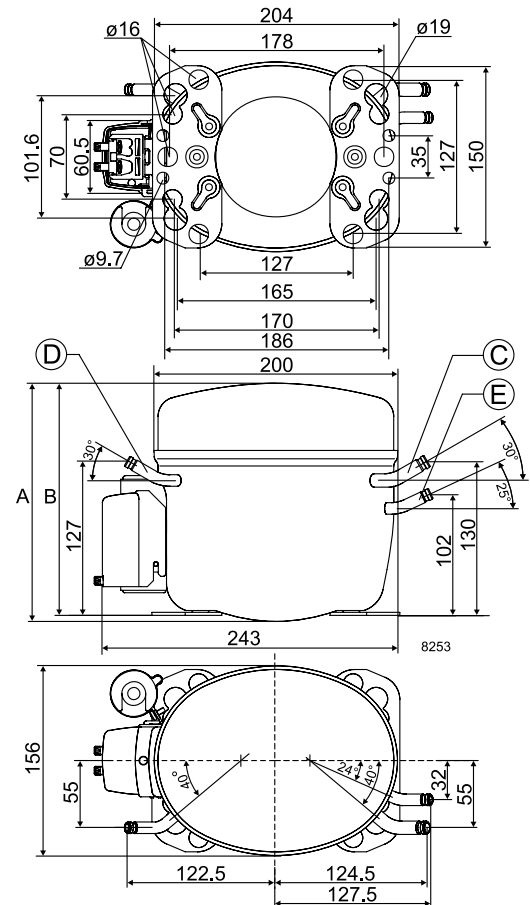
NL



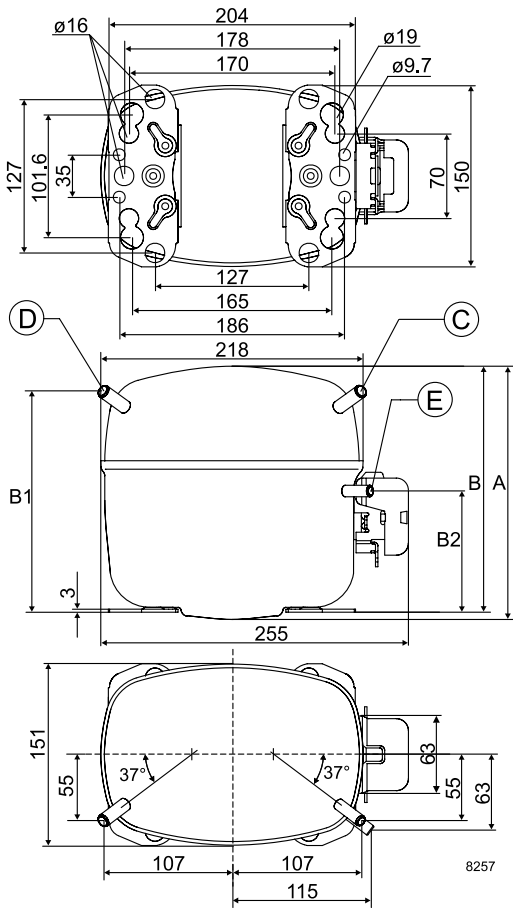
NF



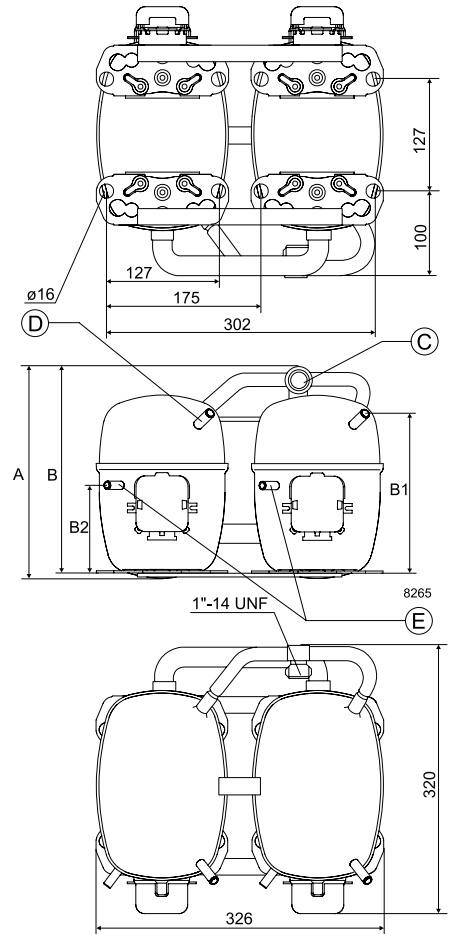
FR



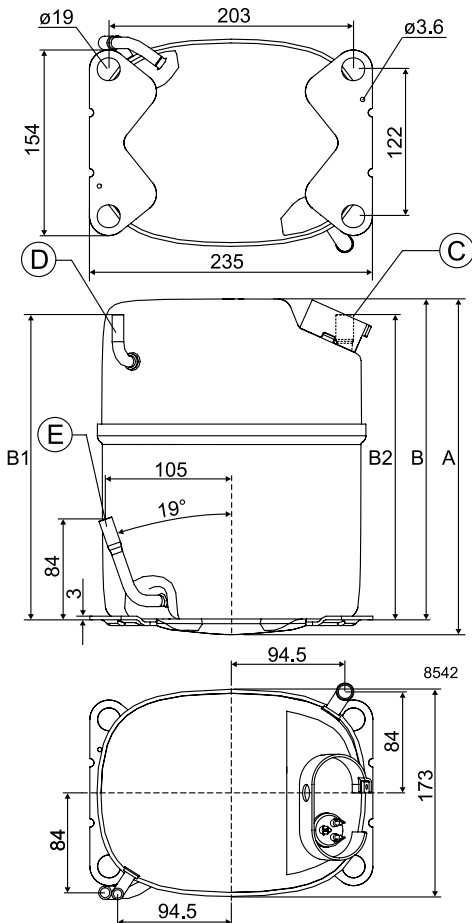
SC



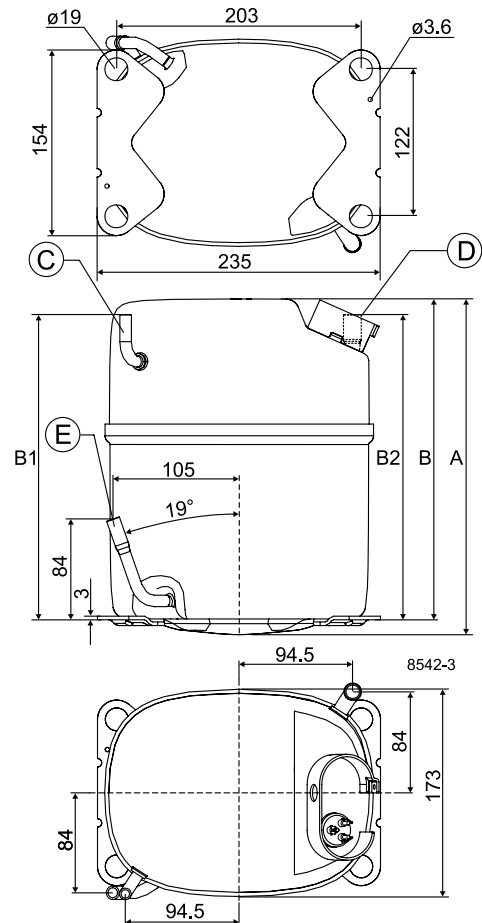
SC-Twin

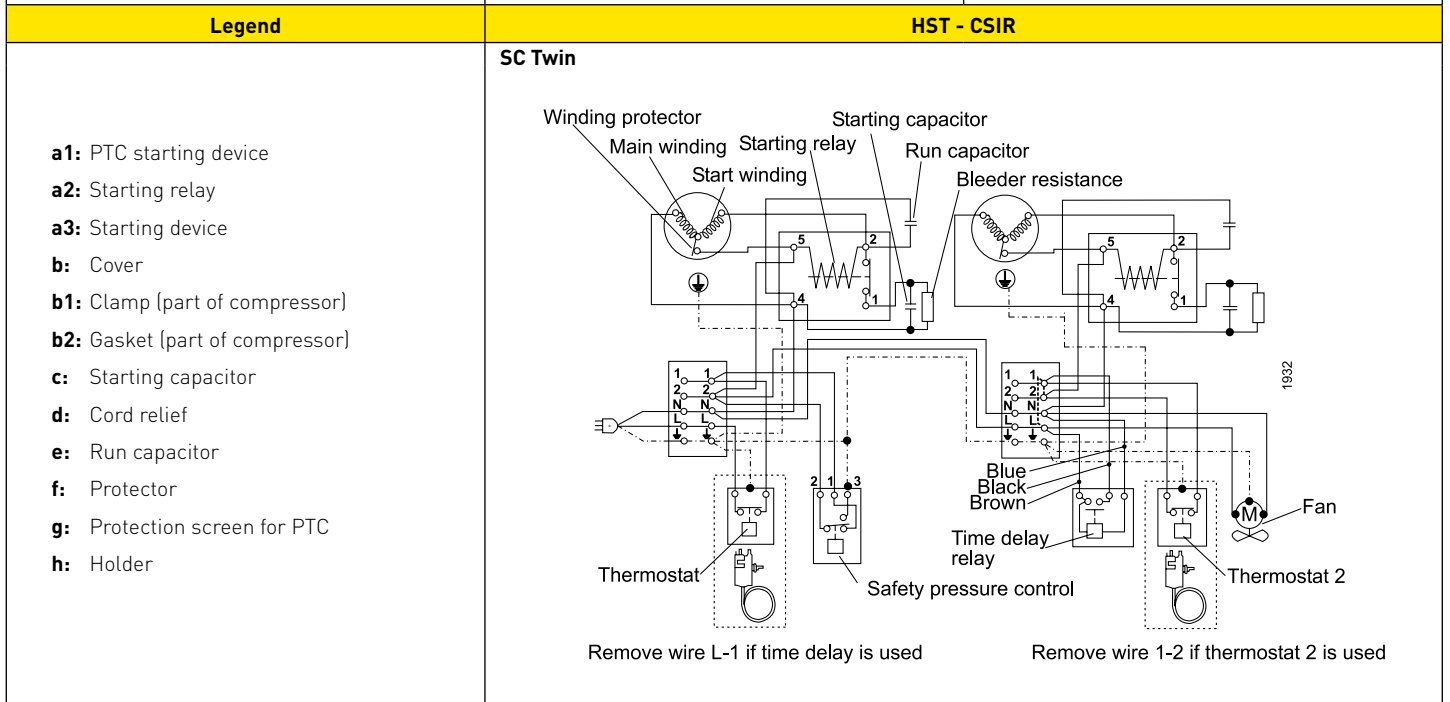
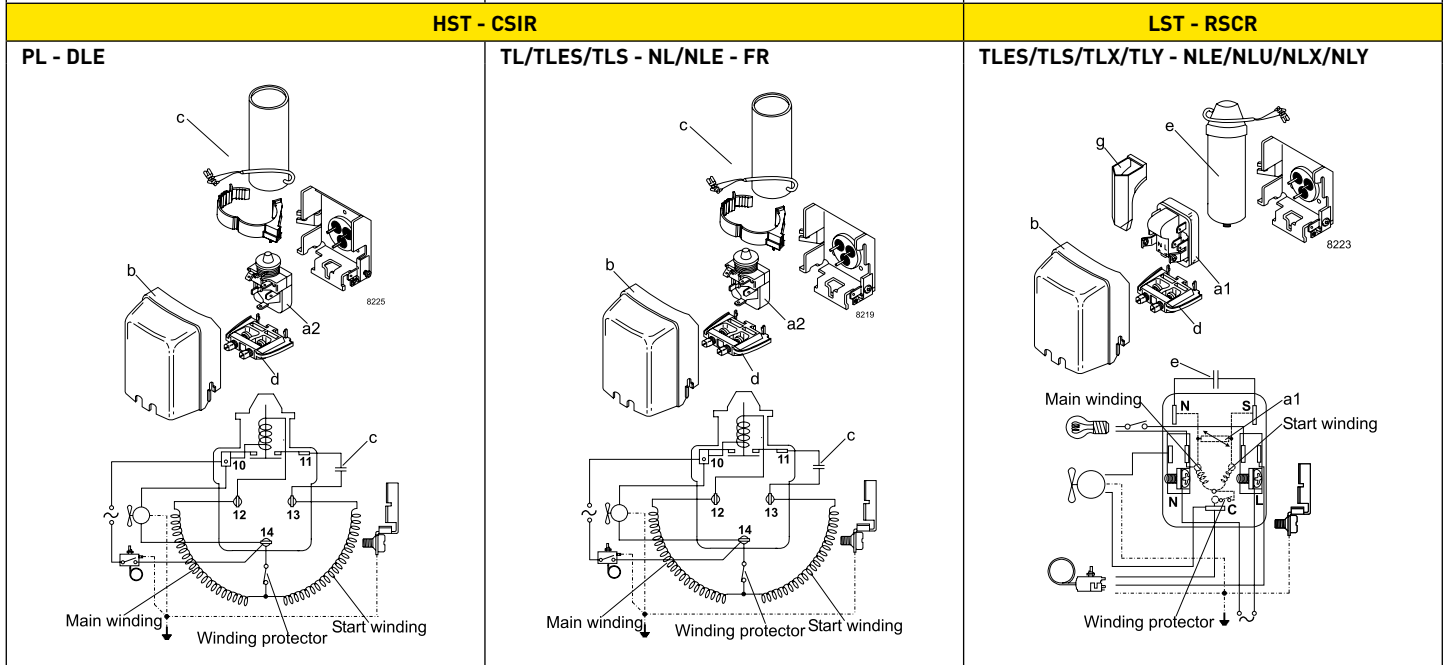
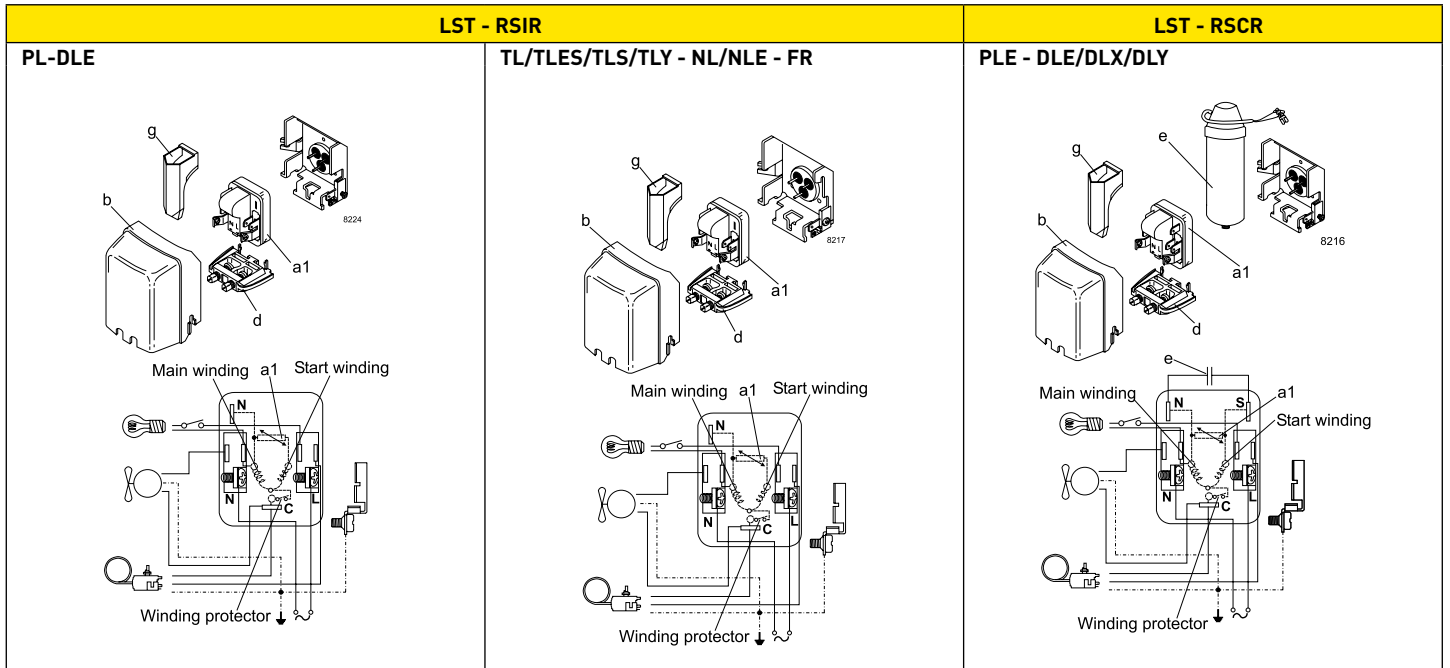


GS



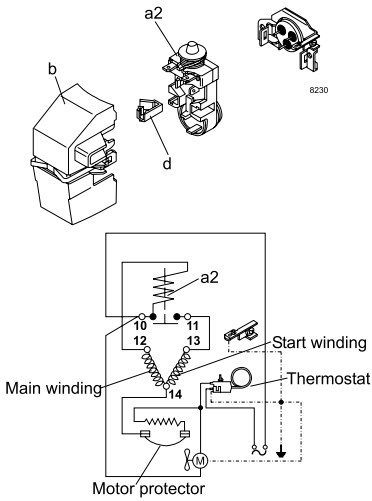
GS34CLX (interchanged connectors)



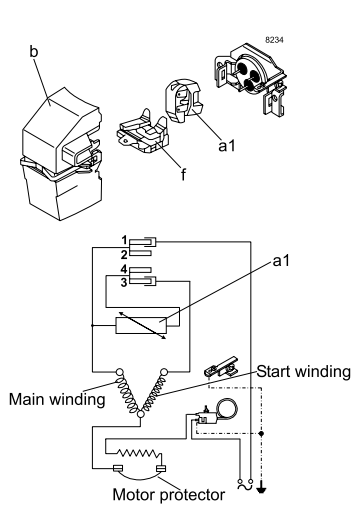


LST - RSIR

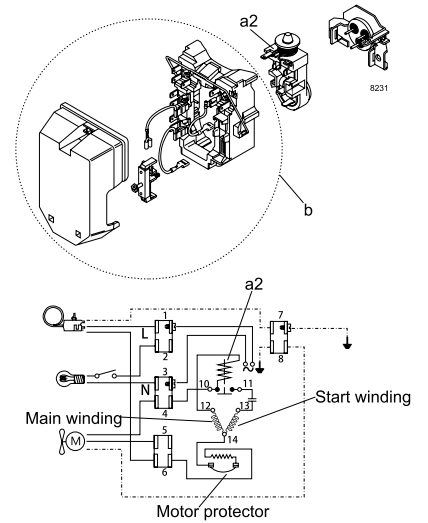
TF/TFS - NF - FF - external protector



TT - external protector

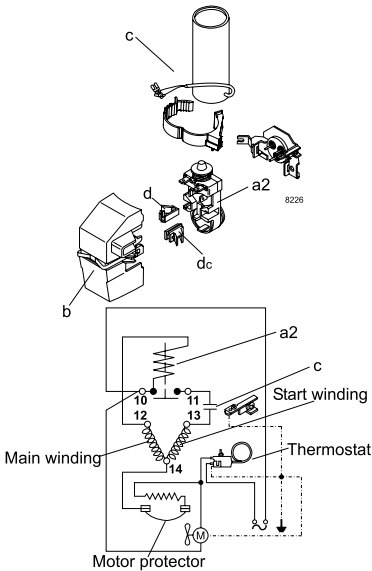


TF - NF - FF - external protector

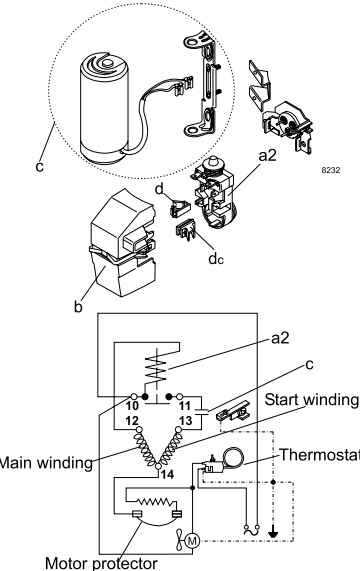


HST - CSIR

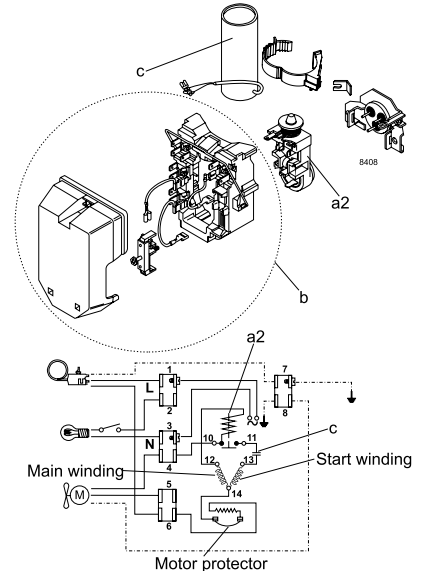
TFS - NF - FF - external protector



FF - external protector

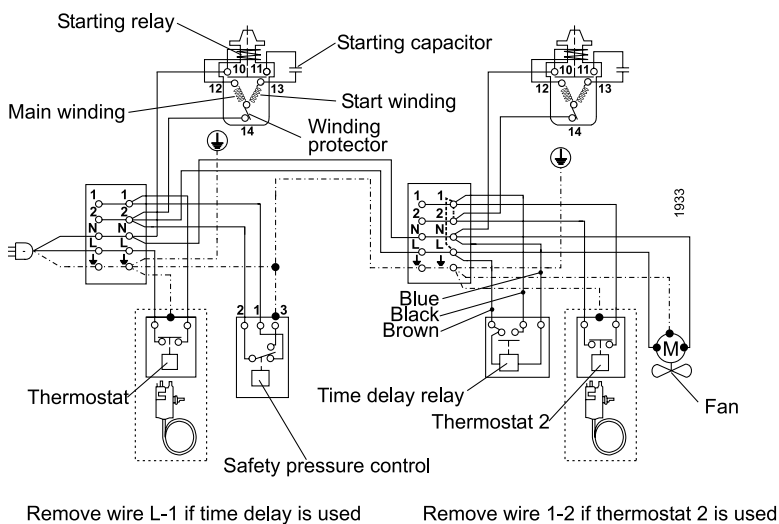


TF - NF - FF - external protector



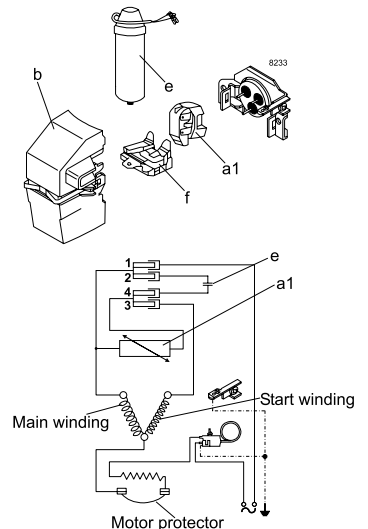
HST - CSR

SC Twin

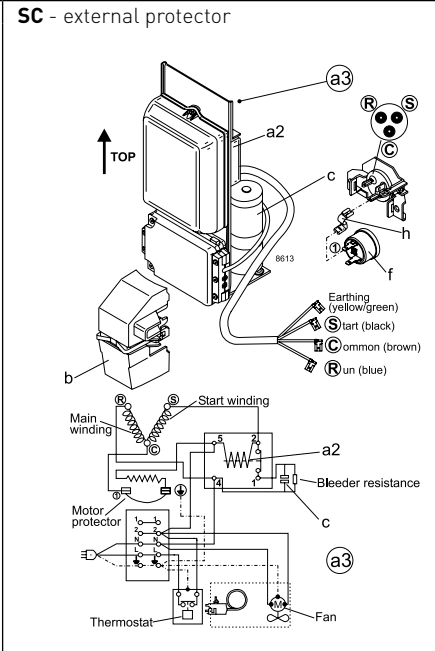
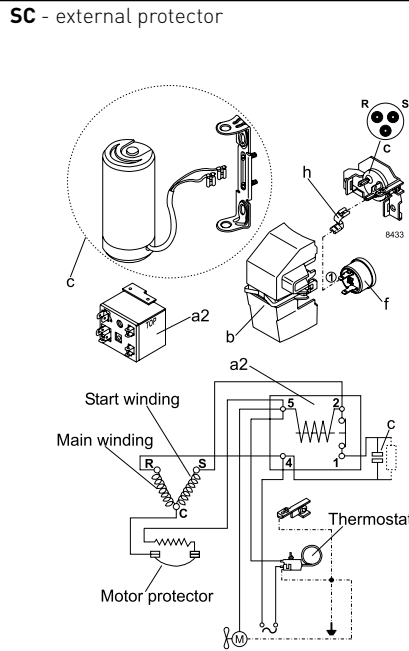
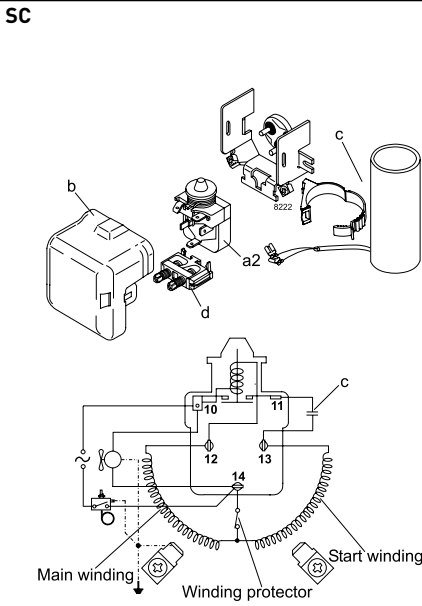


LST - RSCR

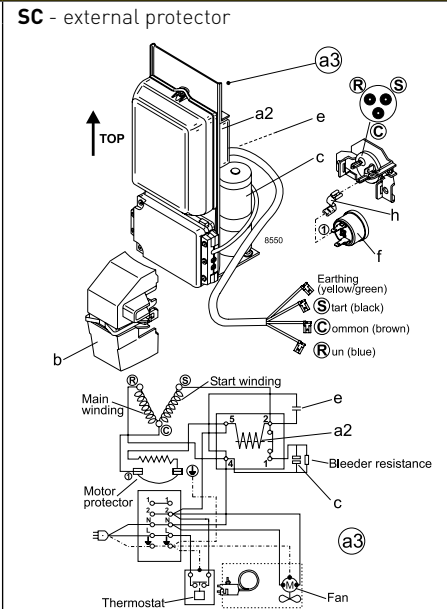
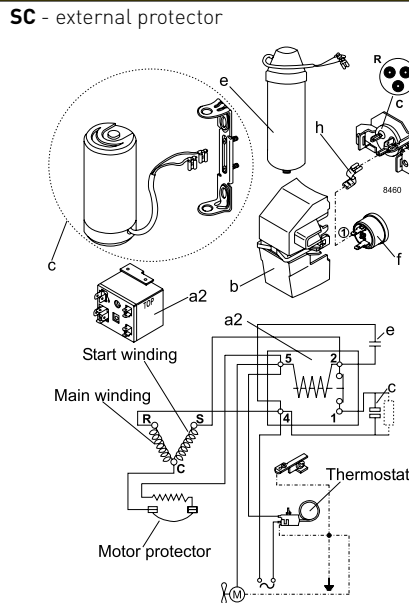
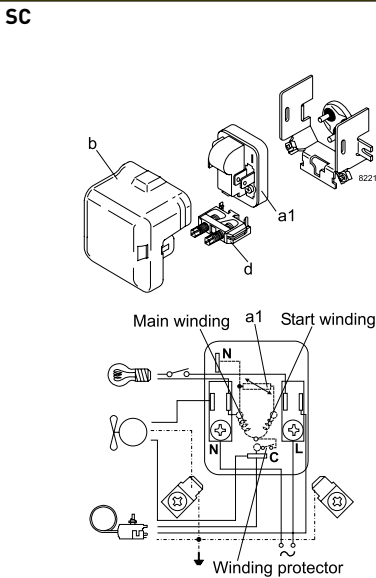
TTE/TTY - NTX/NTY - external protector



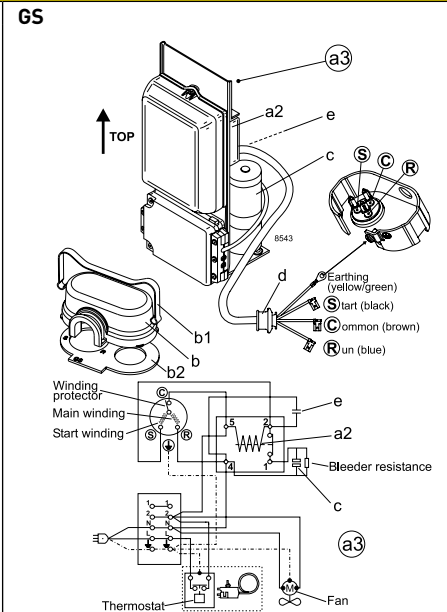
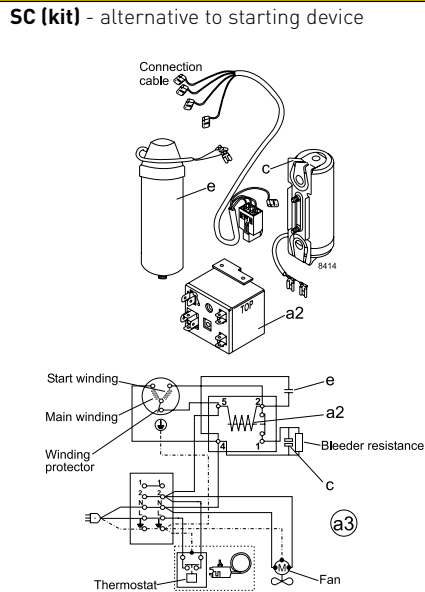
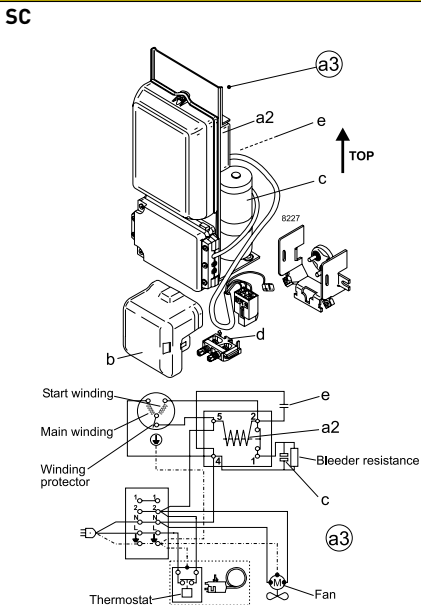
HST - CSIR



LST - RSIR

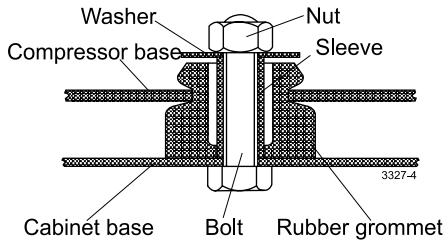
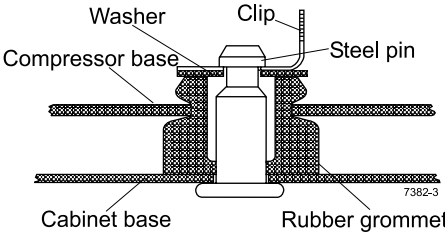
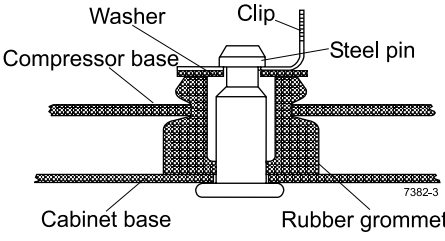
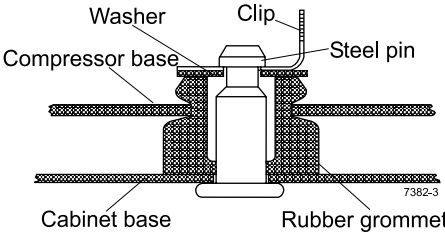
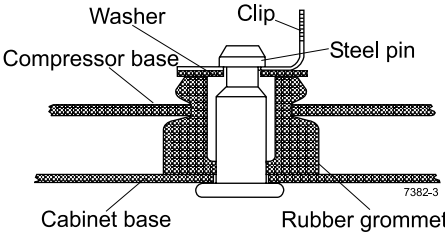
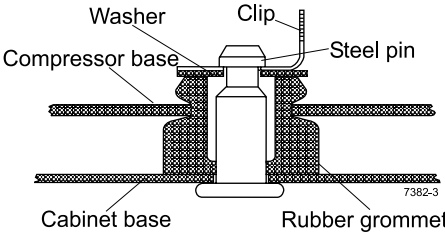


HST - CSIR



Mounting accessories

Mounting	Code number	Bolt / pin dimension	Comp. base hole	Type of packaging	Compressor series	Parts list
Bolt joint	118-1917	M6 metric	16 mm	Single pack for one compressor	BD- / P- / T- / X- / D- / N- / F- / S-Series	I
Bolt joint	118-1918	M6 metric	16 mm	Industrial pack in any quantity	BD- / P- / T- / X- / D- / N- / F- / S-Series	I
Bolt joint	107B9150	M8 metric	19 mm	Single pack for one compressor	G-Series	II
Bolt joint	118-1946	1/4 inch	16 mm	Single pack for one compressor	BD- / P- / T- / X- / D- / N- / F- / S-Series	III
Bolt joint	118-1949	1/4 inch	19 mm	Single pack for one compressor	all with 19 mm base holes (except G-Series)	IV
Snap-on	118-1947	∅ 7.3 mm	16 mm	Single pack for one compressor	BD- / P- / T- / X- / D- / N- / F- / S-Series KAPPA / DELTA	V
Snap-on	118-1919	∅ 7.3 mm	16 mm	Industrial pack in any quantity	BD- / P- / T- / X- / D- / N- / F- / S-Series KAPPA / DELTA	V

Parts list [4 pcs. per compressor needed]				Symbol drawings	
I	Sleeve ∅ 8 mm x 6.4 mm x 0.8 mm	112-2052		Compressor base	Cabinet base
	Washer ∅ 20 mm x ∅ 6.7 mm x 1 mm	112-2053			
	Bolt M6 x 25 mm	681X1130			
	Nut M6	118-3659			
	Rubber grommet 16 mm	118-3661			
II	Sleeve ∅ 11 mm x 8.6 mm x 1.2 mm	107B9152		Compressor base	Cabinet base
	Washer ∅ 20 mm x ∅ 8.8 mm x 1.2 mm	107B9155			
	Bolt M8 x 40 mm	107B9153			
	Nut M8	107B9154			
III	Sleeve ∅ 8.3 mm x 6.7 mm x 0,8 mm	112-2088		Compressor base	Cabinet base
	Washer ∅ 20 mm x ∅ 6.7 mm x 1 mm	112-2053			
	Bolt 1/4 x 1 inch, 20 UNC	119-3002			
	Nut 1/4 inch, 20 UNC	119-3031			
IV	Rubber grommet 16 mm	118-3661		Compressor base	Cabinet base
	Sleeve ∅ 9.5 mm x 7.9 mm x 0,8 mm	112-2085			
	Washer ∅ 20 mm x ∅ 6.7 mm x 1 mm	112-2053			
	Bolt 1/4 x 1 1/4 inch, 20 UNC	119-3002			
V	Nut 1/4 inch, 20 UNC	119-3031		Compressor base	Cabinet base
	Rubber grommet 19 mm	118-3666			
	Steel pin	118-3586			
	Washer ∅ 21 x ∅ 8.1 mm x 0.9 mm	118-3588			
V	Clip	118-3585		Compressor base	Cabinet base
	Rubber Grommet 16 mm	118-3661			

Further information

Applications

- LBP:** Low Back Pressure
HBP: High Back Pressure
MBP: Medium Back Pressure

Motor types

- RSIR:** Resistant Start Induction Run
RSCR: Resistant Start Capacitor Run
CSIR: Capacitor Start Induction Run
CSR: Capacitor Start Run

Compressor cooling

- S = Static cooling normally sufficient
O = Oil cooling
F1 = Fan cooling 1.5 m/s (compressor compartment temp. equal to ambient temperature)
F2 = Fan cooling 3.0 m/s necessary

Starting devices

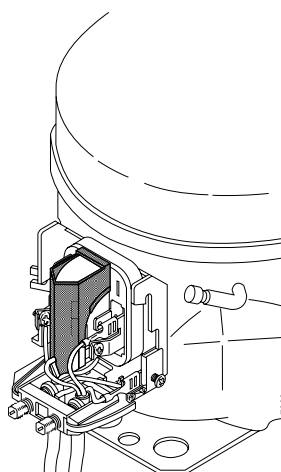
- LST:** Low Starting Torque
LST is used with capillary tube control and pressure equalizing. (Pressure equalizing may exceed 10 minutes). The PTC starting device requires 5 minutes cooling before each start.
- HST:** High Starting Torque
HST consisting of relay and starting capacitor is used for expansion valve control or for capillary tube control without pressure equalizing.
- ePTC:** Electronically controlled PTC
- Compressor restart possible after a few seconds
 - Operational wattage loss reduced by 2 watt
 - PTC protection screen not needed (surface temp. < 82 °C)

Accessories for SC Twin

- SC10/10, SC12/12 and SC15/15:**
Service valve for 12 mm tube 118-7350
Solder connector for 12 mm tube 104B0584
- SC18/18 and SC21/21:**
Service valve for 16mm tube 118-7351
Solder connector for 16mm tube 118-7405
- SC10/10, SC12/12, SC15/15, SC18/18 and SC21/21:**
Seal ring for service valve and solder connector 118-3638
Time delay relay 117N0001
Check valve (to be used with time - delay relay) 020-1014

PTC protection screen

- Note:**
To fulfil the requirements of EN 60335-2-34 the protection screen 103N0476 must be applied to the PTC starting device.



OUR IDENTITY

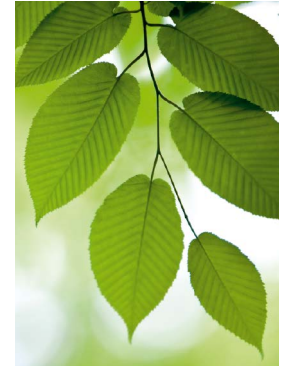
At Secop we are committed to our industry and are genuinely passionate about the difference we are able to make for our customers. We understand their business and objectives and the challenges of today's world of refrigeration and cooling systems.

We work in a straightforward way, being open, direct and honest because we want to make things clear and easy. Our people are committed to increasing value for our customers and constantly strive for better performance, knowing that our own progression and success is dependent on theirs.

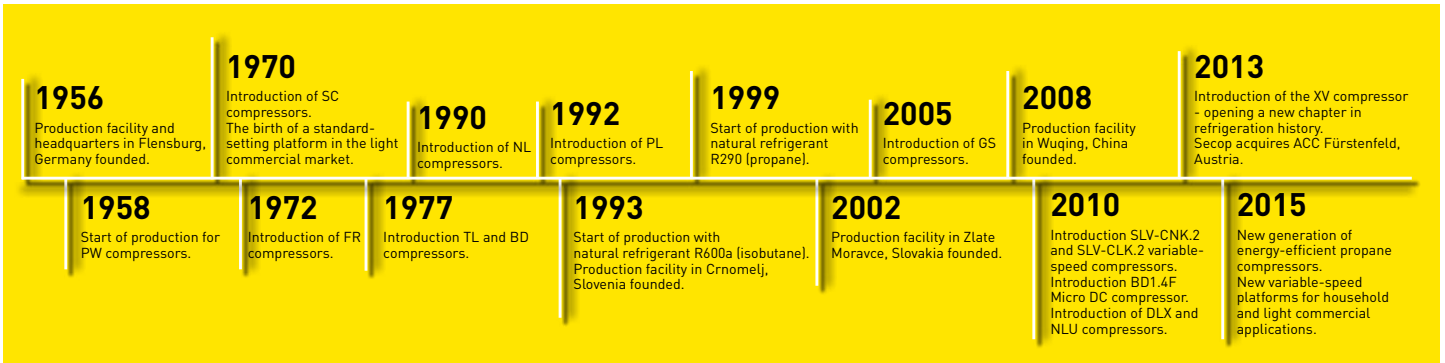
A NEWCOMER WITH 60 YEARS OF EXPERIENCE

Formerly known as Danfoss Compressors, Secop is one of the founding fathers of modern compressor technology with an experience that goes back to the beginning of the 1950s.

For more than 25 years, Secop has been setting the standard in compressor technology by developing highly efficient variable-speed compressors and by compressors working with hydrocarbons.



OUR JOURNEY SO FAR



Low Cooling Capacity High

HOUSEHOLD

LIGHT COMMERCIAL

AC



DC



DC-POWERED